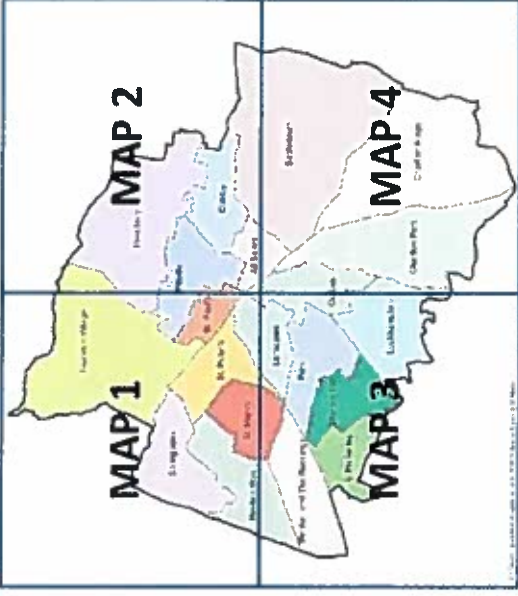


**EMPLOYMENT MAP 1**

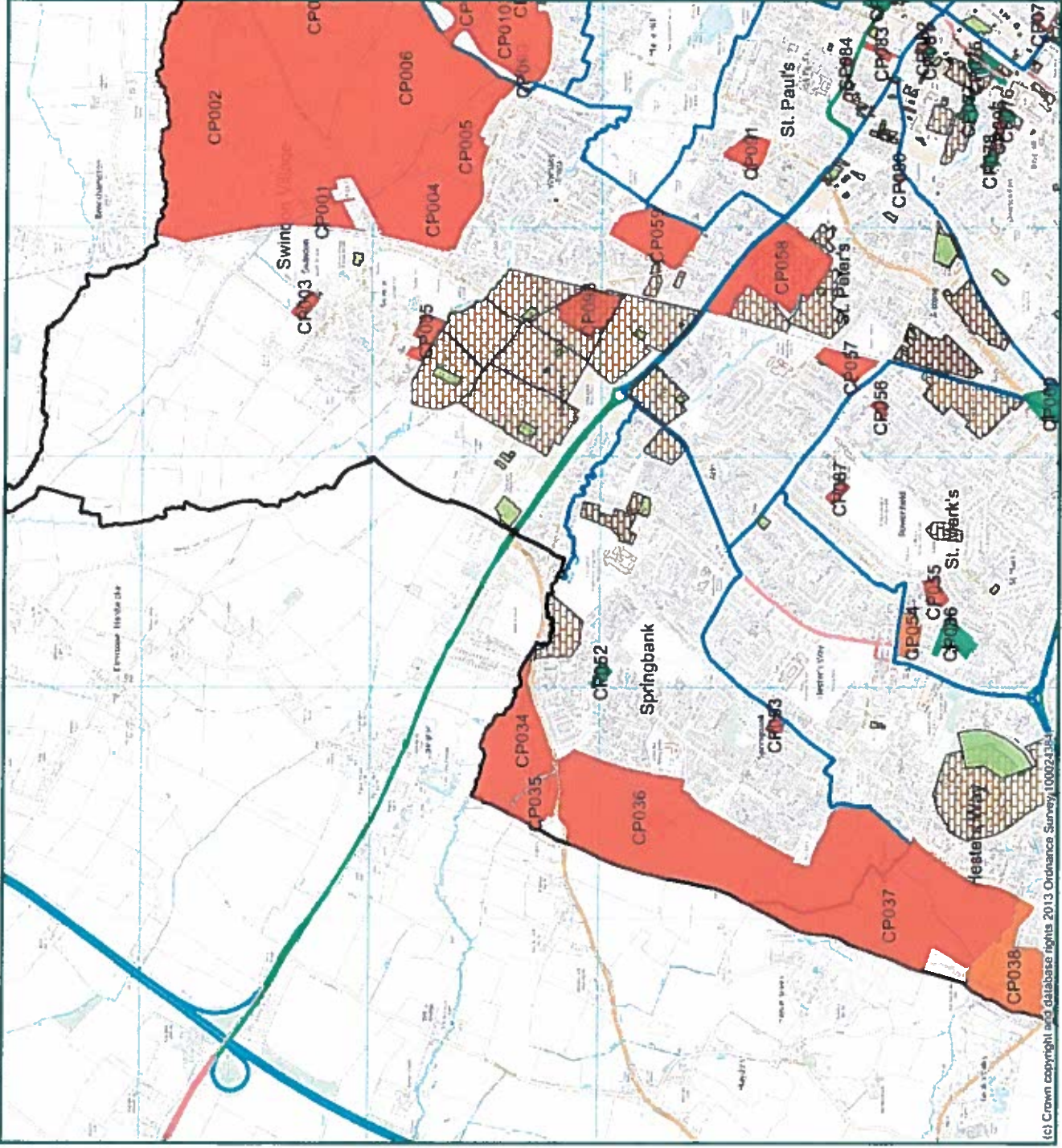


Refer to site proforma to view details of the sites coloured Red, Amber and Green (you will need the site reference no.)  
 Make comments online

**Site Assessments**

**Cheltenham Plan I&O Employment sites**

- Greatest potential for employment
- Potential issues or not as favourable as green site
- Not considered suitable for employment
- Existing Employment Sites
- Planning Permission for employment use (April 2014)

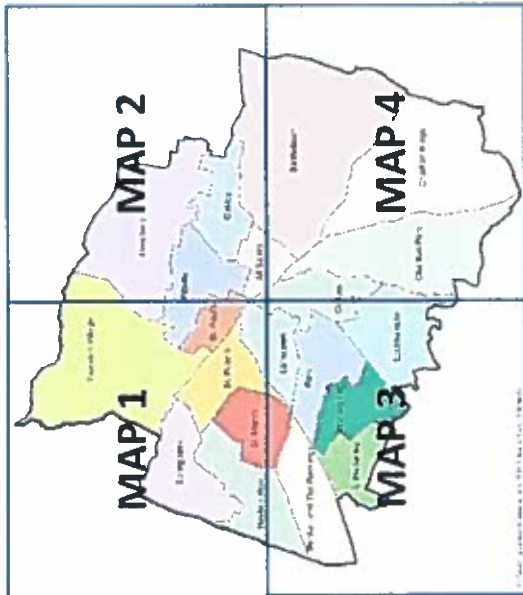


1:18000 at A3  
 © Crown copyright and database rights 2015  
 Ordnance Survey 100024384



(c) Crown copyright and database rights 2013 Ordnance Survey 100024384

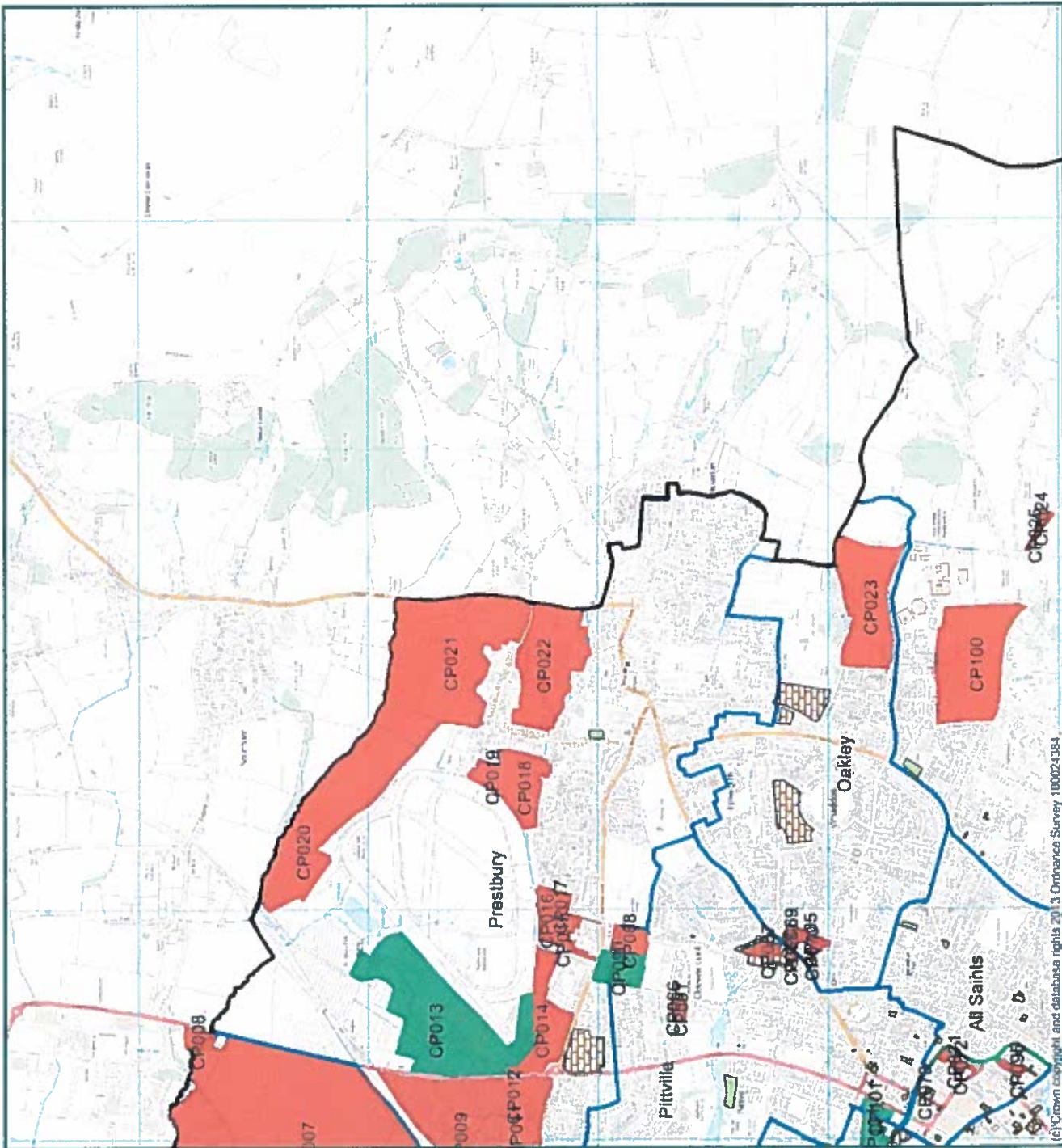
# EMPLOYMENT MAP 2



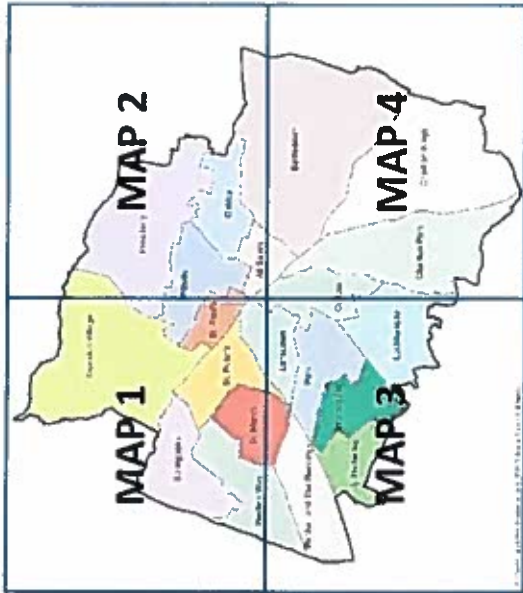
Refer to site proforma to view details of the sites coloured Red, Amber and Green (you will need the site reference no.)  
 Make comments online

**Site Assessments**  
 Cheltenham Plan I&O Employment sites

- Greatest potential for employment
- Potential issues or not as favourable as green sites
- Not considered suitable for employment
- Existing Employment Sites
- Planning Permission for employment use (April 2014)



# EMPLOYMENT MAP 3



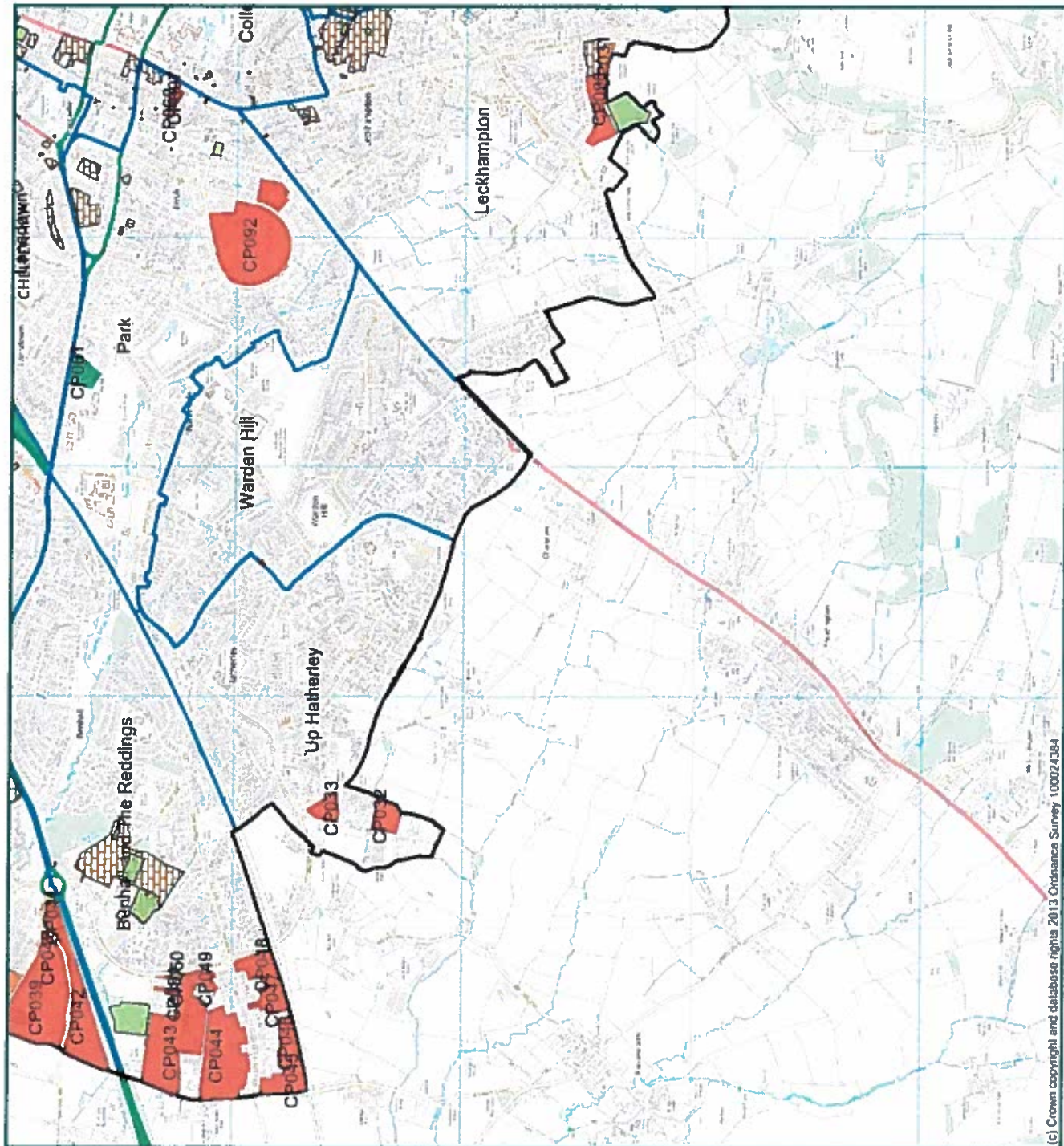
Refer to site proforma to view details of the sites coloured Red, Amber and Green (you will need the site reference no.)

Make comments online

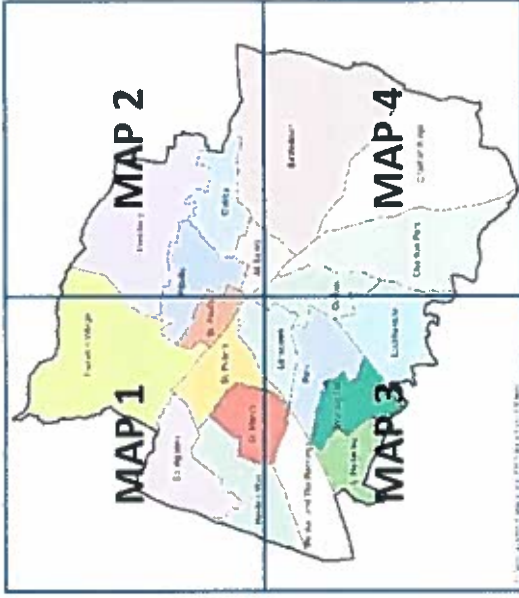
### Site Assessments

#### Cheltenham Plan I&O Employment sites

- Greatest potential for employment
- Potential issues or not as favourable as green sit
- Not considered suitable for employment
- Existing Employment Sites
- Planning Permission for employment use (April 2014)



# EMPLOYMENT MAP 4

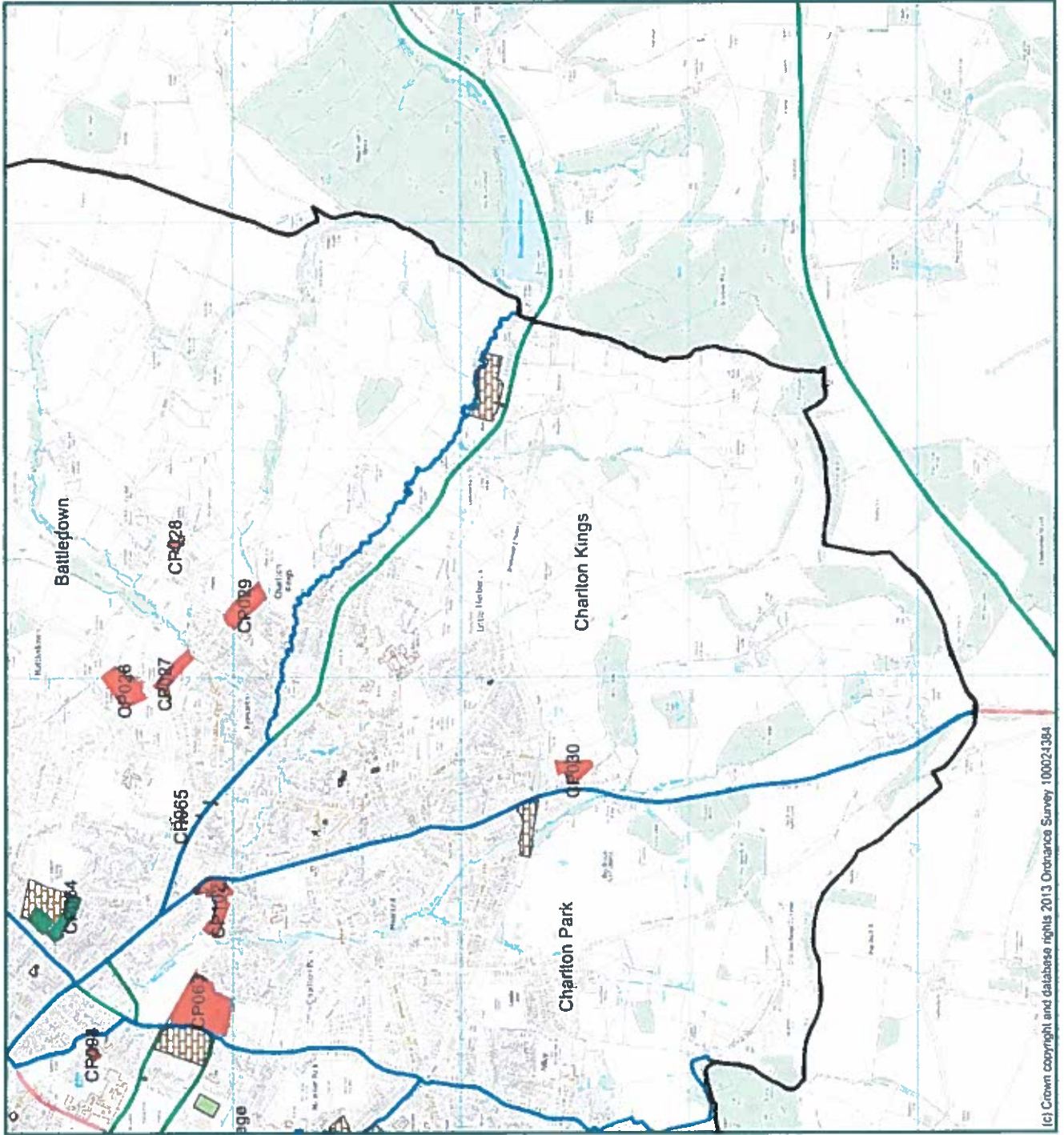


Refer to site proforma to view details of the sites coloured Red, Amber and Green (you will need the site reference no.)  
 Make comments online

## Site Assessments

### Cheltenham Plan I&O Employment sites

- Greatest potential for employment
- Potential issues or not as favourable as green site
- Not considered suitable for employment
- Existing Employment Sites
- Planning Permission for employment use (April 2014)



1:18000 at A3

© Crown copyright and database rights 2015  
 Ordnance Survey 100024384

